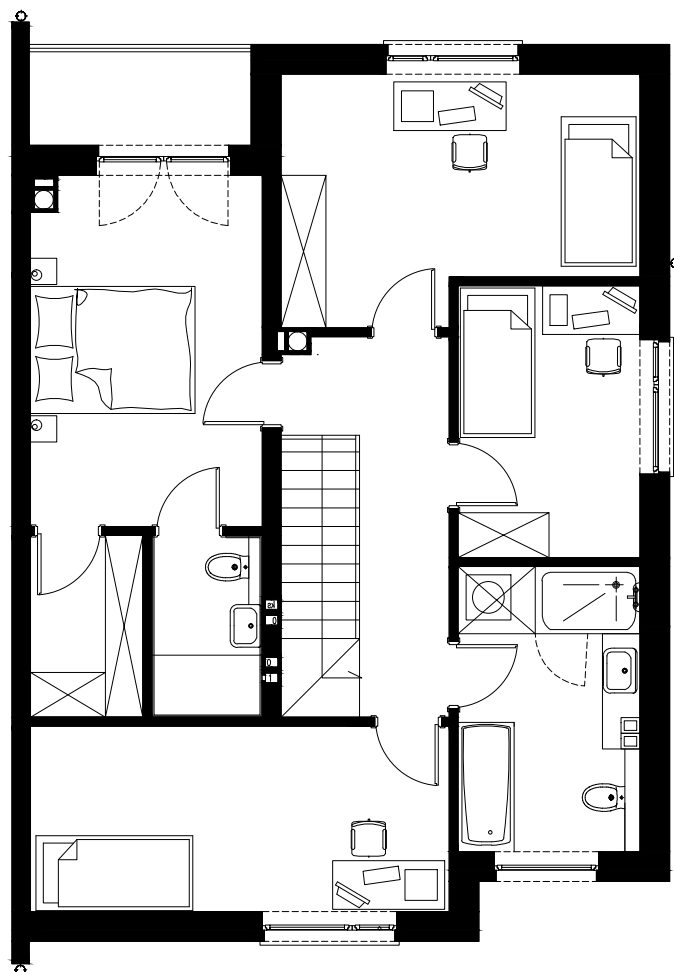


#### PARTER

| ZESTAWIENIE POWIERZCHNI: |           |                      |
|--------------------------|-----------|----------------------|
| 1.1                      | WIATROLAP | 3.54 m <sup>2</sup>  |
| 1.2                      | KORYTARZ  | 5.60 m <sup>2</sup>  |
| 1.3                      | KUCHNIA   | 8.53 m <sup>2</sup>  |
| 1.4                      | JADALNIA  | 8.55 m <sup>2</sup>  |
| 1.5                      | SALON     | 21.66 m <sup>2</sup> |
| 1.6                      | TOALETA   | 1.70 m <sup>2</sup>  |
| 1.7                      | KOTŁOWNIA | 5.72 m <sup>2</sup>  |
| 1.8                      | GARAZ     | 21.67 m <sup>2</sup> |
| 1.9                      | SCHODY    | 3.00 m <sup>2</sup>  |
| SUMA BEZ GARAZU I KOTŁ:  |           | 55.30 m <sup>2</sup> |
| SUMA Z GARAZEM I KOTŁ:   |           | 79.97 m <sup>2</sup> |



#### PIĘTRO

| ZESTAWIENIE POWIERZCHNI: |           |                      |
|--------------------------|-----------|----------------------|
| 2.1                      | KORYTARZ  | 7.37 m <sup>2</sup>  |
| 2.2                      | SYPIALNIA | 14.39 m <sup>2</sup> |
| 2.3                      | ŁAZIENKA  | 3.60 m <sup>2</sup>  |
| 2.4                      | GARDEROBA | 3.64 m <sup>2</sup>  |
| 2.5                      | POKÓJ     | 13.88 m <sup>2</sup> |
| 2.6                      | ŁAZIENKA  | 9.10 m <sup>2</sup>  |
| 2.7                      | POKÓJ     | 8.83 m <sup>2</sup>  |
| 2.8                      | POKÓJ     | 14.54 m <sup>2</sup> |
| SCHODY                   |           |                      |
| SUMA:                    |           | 76.42 m <sup>2</sup> |

